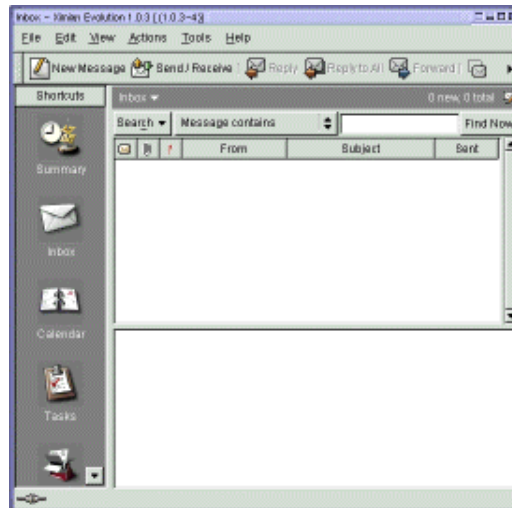


A short Ximian Evolution installation guide



by Christian Van Caillie
<cvc(at)writeme.com>

About the author:
Christian is unix administrator in a private banking institution.



Abstract:

This article is a little installation guide for the Ximian Evolution. This software is able to read and send mail from a Linux workstation via MS Exchange server 5 (NOT for 5.5). In this article, I'll give you some info about my personal experience and my own configuration.

Step by step

First step : Install Red Carpet. This software will check for the latest version for the selected software. In our case : Evolution.

- www.ximian.com/products/evolution/download.html
follow the procedure :
 - Install Red Carpet
 - Select only Red Carpet + your distribution (in my case : Mandrake)
 - download Red Carpet package
 - rpm -Uvh red_carpet-1....rpm
- Launch Red Carpet
 - If you must modify the firewall configuration, do it, else click on OK
 - on the left of the window, click on <unsubscribed channels>. On the right pane, click on

- <Ximian Evolution> and click on the subscribe button.
- select necessary packages and click on <update packages>
 - click on <next>

If you have some trouble with the download, cancel the current one and restart from the <selection package> window.

Once installed, it is possible to unsubscribe Red Carpet for Ximian Evolution. In other words Red Carpet will then not check for updates.

- Evolution Configuration
 - add the hostname and the IP address of your Exchange server
 - start Ximian Evolution
 - In the identity window, fill up your personal info and click on <next>
example: Full Name : Monsieur Toto
E-Mail adress : Toto@truc.com

 - Receiving mail window :
Sever type : IMAP
Host : <hostname of your Exchange Server>
click on <server requires authentication>
in <autentication type> select <login>
in <username> enter your windows domain username!!! and click on <next>

 - time zone window : select your country, click on <next> and on <finish>

The software is installed and, normally, must be working fine.
Please note that :

- For my part, I can't read my contacts and my appointments created with Outlook
- If you use delete to delete contacts or mail, they will be deleted on the server. There is no way to restore them.
- This configuration works for me. If you've some kinds of problems, go directly to www.ximian.com. They have a FAQ sheet that can help.

Enjoy

<p>Webpages maintained by the LinuxFocus Editor team © Christian Van Caillie "some rights reserved" see linuxfocus.org/license/ http://www.LinuxFocus.org</p>	<p>Translation information: en --> -- : Christian Van Caillie <cvc(at)writeme.com></p>
--	---